



Date: Jul 9, 2025

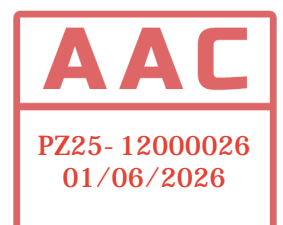
Genesis Lighting
14101 NW 8th street
Sunrise FL 33325
Phone: (954) 306-3931
Fax:

Job Name
RISING TIDE POMPANO BEACH
GENLIGHT25-68601

Bid Date
Jul 9, 2025

Submittal Date
Jul 9, 2025

Architect:
GBM ARCHITECTURE PA
2801 SW 3rd Ave
Fort Lauderdale FL 33315





Transmittal

Genesis Lighting
 14101 NW 8th street
 Sunrise FL 33325
 Phone: (954) 306-3931
From: CHRISTINE SCHUSTER

Project **RISING TIDE POMPANO BEACH**
Quote# GENLIGHT25-68601
Location

Contact:

ATTACHED WE ARE SENDING YOU 1 COPY OF THE FOLLOWING ITEM:

- | | | |
|-----------------------------------|--|--------|
| <input type="checkbox"/> Drawings | <input type="checkbox"/> Specifications | Other: |
| <input type="checkbox"/> Prints | <input type="checkbox"/> Information | |
| <input type="checkbox"/> Plans | <input checked="" type="checkbox"/> Submittals | |

THESE ARE TRANSMITTED FOR:

- | | | |
|--|---|---------------------------------|
| <input checked="" type="checkbox"/> Prior Approval | <input type="checkbox"/> Resubmittal for Approval | <input type="checkbox"/> Record |
| <input type="checkbox"/> Approval | <input type="checkbox"/> Corrections | Bids due on: |
| <input type="checkbox"/> Approval as Submitted | <input type="checkbox"/> Your Use | Other: |
| <input type="checkbox"/> Approval as Noted | <input type="checkbox"/> Review and Comment | |

Type

G
SA

MFG

EELP
XTRALIGHT

Part

VT8-K-4X24L-QT-40K-WD
 VNTM-30000L-40K-XX-4M-N-XX-XX-HSS

Item Note: 25' AG POLES

AAC

PZ25- 12000026
 01/06/2026

Submitted by Genesis Lighting	Job Name: RISING TIDE POMPANO BEACH Architect: GBM ARCHITECTURE PA (Fort Lauderdale)	Catalog Number: VT8-K-4X24L-QT-40K-WD Notes:	Type: G GENLIGHT25-68601
-------------------------------	---	---	--



Project

Type

Catalog Number

SPECIFICATIONS

INDOOR

HOUSING

- One-piece compression-molded polyester fiberglass housing
- Continuous poured in-place gasket
- Offered in 2', 4', and 8' size housings
- Water tight hub for 1/2" conduit entry provided
- Impact resistant diffuser acrylic diffuser held with positive cam latches
- Stainless steel mounting bracket standard
- Stainless steel latches also available
- Dirt and moisture resistant

ILLUMINATION

- Offered in 30K/35K/40K/50K
- Ribbed Frosted acrylic lens standard
- Lumen packages available from 3,166 - 23,594 Lumens

ELECTRICAL

- Quad Tap (QT) 120-277V ballast
- 0-10V Dimmable driver standard

CODE COMPLIANCE

- cETLus Listed for Wet Locations
- Meets UL Requirements
- IP65, IP66, IP67
- NEMA4X rated
- NSF Rated
- ARRA and BAA compliant
- RoHS Compliant

WARRANTY

- 5 Year

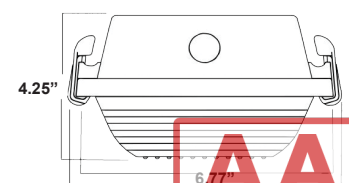
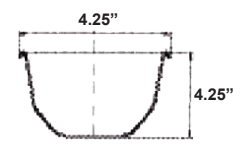
Model#	Size x Wattage	Driver	Color
VT8-K	2X17L (3166 Lm)	QT	30K
	2X24L (4350 Lm)		35K
	2X31L (5470 Lm)		40K
	2X39L (6452 Lm)		50K
	4X17L (3220 Lm)		
	4X24L (4480 Lm)		
	4X30L (5705 Lm)		
	4X37L (6910 Lm)		
	4X48L (8640 Lm)		
	4X70L (11,797 Lm)		
	8X17L (3220 Lm)		
	8X24L (4480 Lm)		
	8X30L (5705 Lm)		
	8X37L (6910 Lm)		
	8X48L (8640 Lm)		
	8X70L (11,787 Lm)		
	8X74L (13,820 Lm)		
	8X96L (17,280 Lm)		
	8X140L (23,594 Lm)		

Options (ships installed)

EM5	- 5W Emergency Battery
EM12	- 12W Emergency Battery
WD	- Wide Distribution
FL	- Frosted Lens Over Board
SFAD	- Smooth Frosted Acrylic Deep Lens
SCAD	- Smooth Clear Acrylic Deep Lens
PCL	- Polycarbonate Lens
REFL	- Mirrored Aluminum Reflector
SSL	- Stainless Steel Latches
SSLTPS	- Stainless Steel Latches with Tamper Proof Screws
OCSE	- External Occupancy Sensor
OCSI	- Internal Occupancy Sensor



VT8-K
LED Vapor Tight





PZ25- 12000026
 01/06/2026
 VT8-K-LED
 rev: 11072024

Submitted by Genesis Lighting	Job Name: RISING TIDE POMPANO BEACH Architect: GBM ARCHITECTURE PA (Fort Lauderdale)	Catalog Number: VNTM-30000L-40K-XX-4M-N-XX-XX-HSS Notes: 25' AG POLES	Type: <div>SA</div> GENLIGHT25-68601
-------------------------------	---	--	--



PROJECT INFORMATION

Project Name	Type
Catalog #	Date

VIENTO AREA LUMINARE



APPLICATIONS

- Area Lighting
- Retail Spaces
- Street Lighting
- Auto Dealerships & Sales Lots
- Parks & Recreation Areas
- Safety & Security

APPROVALS

- ETL Listed
- Complies with UL 1598 and CSA C22.2
- Suitable for wet locations
- 3G Vibration Rated
- IP66 Rated
- BAA Compliant
- RoHS Compliant
- ATAL Tested www.ata-labs.com
- Select models DLC Premium. For a complete list of DLC Premium products visit: www.xtralight.com/dlc or qpl.designlights.org



FEATURES

- Lumen packages ranging from 5000L to 55000L.
- Outstanding photometric performance results in excellent uniformity, optimal pole spacing and lower power density.
- Low profile architectural design offers a contemporary appearance with excellent light output.
- Enhanced foot candles delivered utilizing multiple optical options.
- Full cut-off optics with zero uplight.

CONSTRUCTION

- Thermal management achieved with a one-piece die-cast aluminum has integral heat sink fins and a hinged electrical compartment.
- Thermoset powder coat, available in bronze, white or custom colors (consult factory)
- IP66, precision molded, polycarbonate optics providing impact resistance and UV stabilization.
- Upgraded door to provide better protection from water intrusion.

ELECTRICAL

- Voltage: 120-277V or 347-480V AC input
- Driver: Class 1, constant current, calibrated to lumen package (0-10V dimming standard)
- Surge Protection: 20kA standard.
- Operating temperature: -40°C to +50°C (-40°F to +122°F)

CONTROLS

- Programmable smart sensor and twist-lock receptacle control options available.

MOUNTING

- Integral arm with key hole slot facilitates quick and easy installation.
- Adjustable slip fitter, round pole adaptor, universal pole adaptor, and other mounting options available as accessories.

WARRANTY

- Backed by XtraLight's limited 5-year warranty.

ORDER LOGIC

SAMPLE CATALOG NUMBER: VNTL-55000L-50K-DIM-5SN-BZ

VNT				MUST SPECIFY				MUST SPECIFY		
	SIZE	MODEL	CCT¹	DRIVER	OPTICS	ORIENTATION	FINISH	CONTROLS	OPTIONS	
	S Small	5000L	30K 3000K	DIM Dim 0-10V, 120-277V	2M Type II Medium	N Normal (forward)	BZ Bronze	XX No Fixture Controls	HSS House-side Shield	
		10000L	40K 4000K				WH White	IS3³ IR Smart Sensor, 20"H/40"D	ASF⁵ Adjustable Slip Fitter Cord Whip	
		15000L	50K 5000K	DIM0² Dim 0-10V, 120-277V to off	3M Type III Medium	L Left	CC⁴ Custom Color	IS7⁵ IR Smart Sensor, 40"H/100"D	3⁶ NEMA 3-Pin Twist-Lock Receptacle	
		18000L								
	M Medium	15000L		HVD Dim 0-10V, 347-480V	4M Type IV Medium			BS3³ Bluetooth Smart Sensor, 20"H/40"D	5⁶ NEMA 5-Pin Twist-Lock Receptacle	
		20000L								
		25000L			5S⁵ Type V Square			BS7⁵ Bluetooth Smart Sensor, 40"H/100"D	7⁶ NEMA 7-Pin Twist-Lock Receptacle	
		30000L								
		35000L						CAS Casambi Controlled		
	L Large	30000L						AUT Autani Controlled		
		35000L								
		40000L						SYN Synapse Controlled		
		45000L								
		50000L						SWX Sensorworx Controlled		
		55000L								
								CUS Custom Sensor (Factory Installed)		

- Custom CCT available from 2700K - 6500K.
- Some models may not be available with DIMO (Dim to off).
- The 5S (Type V Square) optic option is not available with L (Left) or R (Right) orientations.
- Provide the desired RAL number for custom colors.
- Sensor integrated in bottom fixture. (See dimensional drawing)
- The ASF (Adjustable Slip Fitter Cord Whip) must be paired with the Adjustable Slip Fitter accessory (sold separately).
- Photocell ordered separately. (See page 6)



<https://www.xtralight.com> • (800) 678-6960 • customerservice@XLM.com

XtraLight® reserves the right to change specifications without notice.

AAC

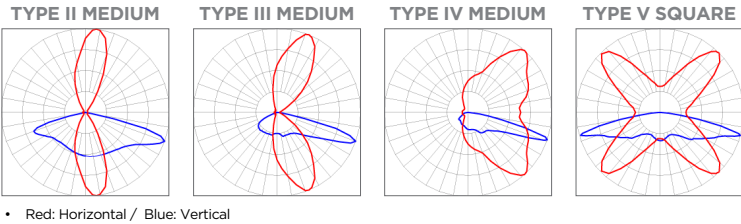
Page 1/6 Rev. 041125

VNT
PZ25- 12000026
01/06/2026

VIENTO AREA LUMINARE

VNT

ISO LINES



• Red: Horizontal / Blue: Vertical

PHOTOMETRIC DATA

STANDARD										
SIZE	MODEL	OPTICS	3000K		4000K		5000K		WATTAGE	BUG RATING
			LUMENS	EFFICACY	LUMENS	EFFICACY	LUMENS	EFFICACY		
VNTS SMALL	5000L	2M	5418	151	5644	156	5559	154	36	B2-U0-G2
		3M	5113	142	5326	148	5246	146		B2-U0-G3
		4M	5054	140	5265	146	5186	144		B1-U0-G3
		5S	5172	144	5387	149	5306	147		B3-U0-G2
	10000L	2M	11533	152	12014	158	11834	156	76	B3-U0-G3
		3M	10855	143	11307	149	11137	147		B2-U0-G2
		4M	10765	142	11214	148	11046	145		B2-U0-G4
		5S	11005	145	11464	151	11292	149		B4-U0-G3
	15000L	2M	15802	145	16460	152	16213	149	109	B3-U0-G3
		3M	15022	138	15648	144	15413	141		B3-U0-G3
		4M	14911	137	15532	143	15299	140		B3-U0-G5
		5S	15252	140	15887	146	15649	144		B4-U0-G3
	18000L	2M	18315	142	19078	147	18792	146	129	B3-U0-G3
		3M	17206	133	17923	139	17654	137		B3-U0-G3
		4M	17270	134	17990	139	17720	137		B3-U0-G5
		5S	17461	135	18189	141	17916	139		B4-U0-G3
VNTM MEDIUM	15000L	2M	15802	146	16460	152	16213	150	108	B3-U0-G3
		3M	15022	139	15648	145	15413	143		B3-U0-G3
		4M	14911	138	15532	143	15299	142		B3-U0-G5
		5S	15252	141	15887	146	15649	145		B4-U0-G3
	20000L	2M	23067	152	24028	158	23668	156	152	B3-U0-G3
		3M	21709	143	22614	149	22275	147		B3-U0-G3
		4M	21531	142	22428	148	22092	145		B3-U0-G5
		5S	22011	145	22928	151	22584	149		B4-U0-G3
	25000L	2M	25861	144	26939	149	26535	147	180	B4-U0-G4
		3M	23574	131	24556	136	24188	134		B4-U0-G3
		4M	23645	131	24630	136	24261	135		B3-U0-G4
		5S	24347	135	25362	141	24981	139		B5-U0-G3
	30000L	2M	31340	144	32646	151	32156	148	217	B4-U0-G4
		3M	29674	137	30910	142	30446	140		B4-U0-G4
		4M	29881	138	31126	144	30659	141		B4-U0-G5
		5S	30148	139	31404	145	30933	143		B5-U0-G4
	35000L	2M	35492	143	36971	148	36416	146	249	B4-U0-G4
		3M	33668	135	35071	141	34545	139		B4-U0-G3
		4M	33458	134	34852	140	34329	138		B4-U0-G5
		5S	34451	138	35886	144	35348	142		B5-U0-G4

• Some Photometric Data is extrapolated and subject to change.

VIENTO AREA LUMINARE

VNT

DIMENSIONAL DATA

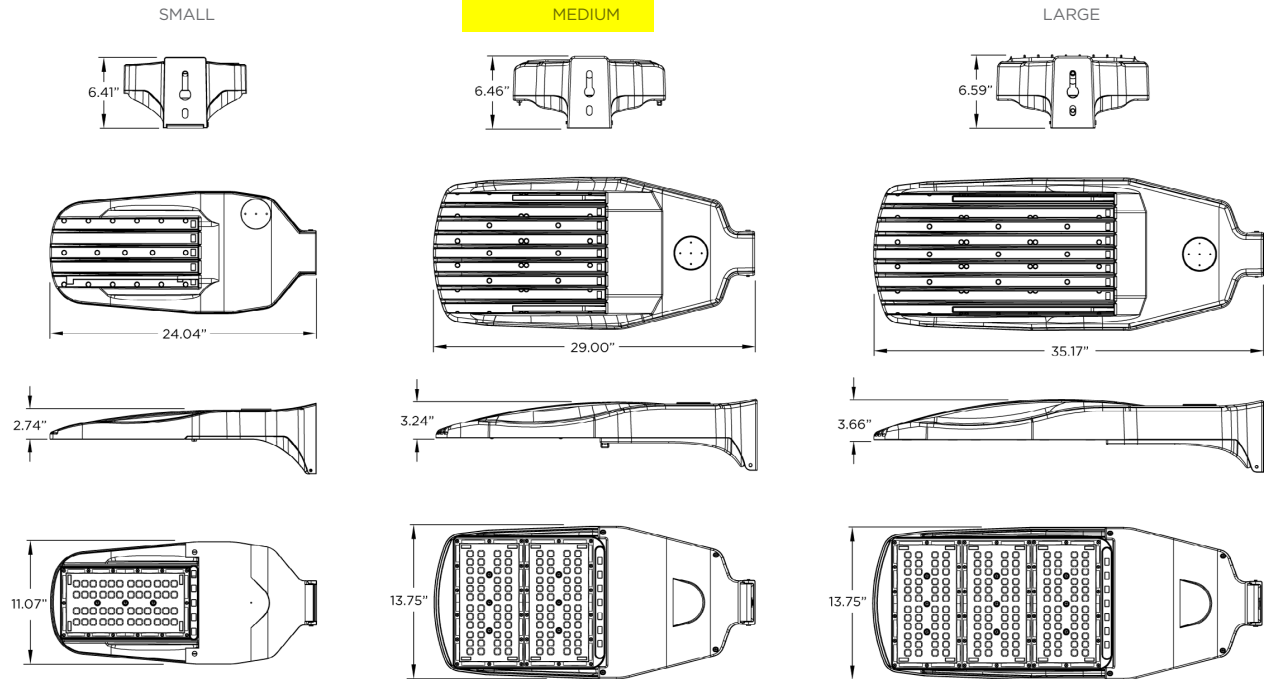
STANDARD SIZES

WEIGHT:

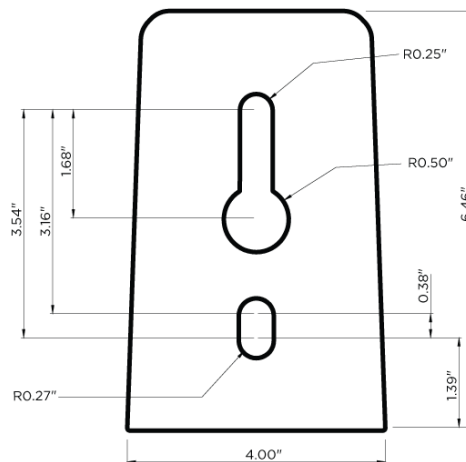
Small = 11 LB

Medium = 29 LB

Large = 39 LB



MOUNTING





- Dimensional Data shows the end, top, side, and bottom views for all standard sizes.
- All weights are rounded up to the nearest 0.5 lb.

VIENTO AREA LUMINARE

VNT

MUST SPECIFY MOUNTING

ACCESSORIES (SOLD SEPARATELY)

VNT-ASF <div>FINISH</div> <div> BZ Bronze WH White CC Custom Color </div>	DESCRIPTION <ul style="list-style-type: none"> Adjustable Slip Fitter Must select (ASF) in the order logic under the Options section. 180° range of motion in 10° increments. EPA: 0.127 sq. ft. - 6.0 LB Viento must not be tilted more than 20° when using ASF 	
VNT-RPA <div>FINISH</div> <div> BZ Bronze WH White CC Custom Color </div>	DESCRIPTION <ul style="list-style-type: none"> Round Pole Adaptor Allows up to four Viento fixtures to be mounted to one pole. 3" to 5" Diameter EPA: 0.03 sq. ft. - 0.75 LB 	
VNT-WB <div>FINISH</div> <div> BZ Bronze WH White CC Custom Color </div>	DESCRIPTION <ul style="list-style-type: none"> Wall Bracket 	
VNT-TWB <div>FINISH</div> <div> BZ Bronze WH White CC Custom Color </div>	DESCRIPTION <ul style="list-style-type: none"> Tenon Wall Bracket Horizontal Mount 8" Square Plate - 2 3/8" OD Must be ordered with the Adjustable Slip Fitter (ASF) accessory. 	

Job Name:
 RISING TIDE POMPANO BEACH
 Architect: GBM ARCHITECTURE PA (Fort
 Lauderdale)
Catalog Number:
 VNTM-30000L-40K-XX-4M-N-XX-XX-
 HSS

Notes: 25' AG POLES

Type:**SA**

GENLIGHT25-68601

VIENTO AREA LUMINARE

VNT

MUST SPECIFY MOUNTING

ACCESSORIES (SOLD SEPARATELY)**VNT-SSA****FINISH**
BZ Bronze
WH White
CC Custom Color
DESCRIPTION

- Sholder-to-Sholder Adaptor
- EPA: 0.90 sq. ft. - 27 LB

**VNT-TMA**

POLE	FINISH	SIZE	MOUNTING
S Square	BZ Bronze	4 4"	01 1 Fixture
R Round	WH White	5 5"	28 2 Fixtures at 180°
		6 6"	29 2 Fixtures at 90°
			39 3 Fixtures at 90°
			32 3 Fixtures at 180°
			49 4 Fixtures at 90°

DESCRIPTION

- Tenon Mount Adaptor
- Dimensions (S): 4"/5"/6"
- Dimensions (R): 4"/5" DIA
- EPA: 0.4 sq. ft. 10 - 16 LB
- VNT-TMAR includes Round Pole Adaptor (VNT-RPA) depending on mounting count.

**VNT-UPM****POLE****FINISH**
SQ Square
RD Round
BZ Bronze
WH White
DESCRIPTION

- Universal Pole Mount Adaptor

**DIMMING CONTROL**
MS5559 Scheduled Dimming, Standard Voltage
MS5560 Scheduled Dimming, High Voltage
MS5561 Constant All-Night Dimming, Standard Voltage
MS5562 Constant All-Night Dimming, High Voltage
DESCRIPTION

- Dimming Control
- Standard Voltage: 105-305 VAC
- High Voltage: 312-530 VAC
- Frequency: 50/60 Hz

**SHORTING CAP****MS1827** Shorting Cap**DESCRIPTION**

- Shorting Cap
- Shorting cap required if no other controls are being used in fixture receptacle.

PHOTOCELL STANDARD ON/OFF
MS0192 120/277
MS5088 480v